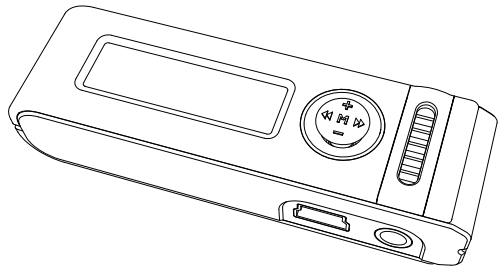


User's Manual

ESONIC CO., LTD.
Made in Korea

Model No. MR-750



Certification No : R-R-ESO-MR-750

1. Caution for safety

- This manual is for user's safety and the prevention of property loss and be sure to read it before use.
- We are not responsible for the damage or third party's claims caused by the usage of this product.
- We are not responsible for the loss of recordings caused by breakdown, repair, other reasons.
- Please save important recordings into PC immediately.
- Do not use it illegally.

Caution and Warning on main body

Warning

- Do not decompose, remodel main body. That can be the cause of fire and failure.
- If you listen to the contents loudly and long time by using earphone, hearing ability can be damaged.
- Do not use at low and high temperature. That can be the cause of fire or failure by a leak by condensation phenomenon.
- Do not leave it alone in humid place or in place exposed to oil. That can be the cause of fire and failure.

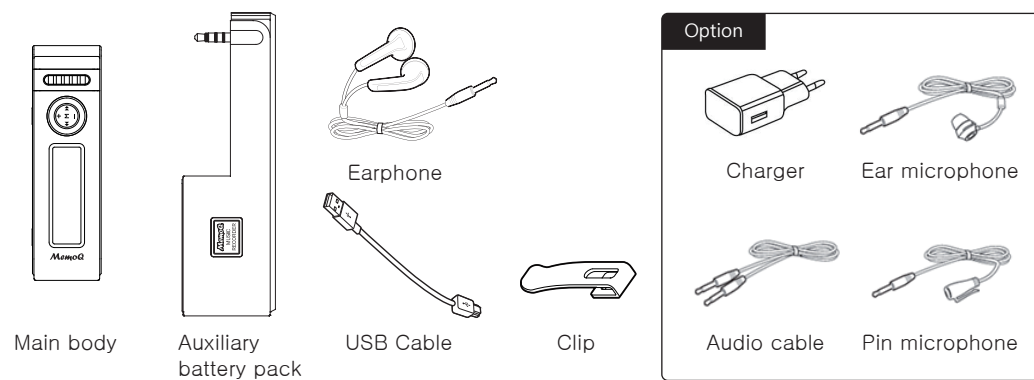
Caution

- To shock or drop the product can be the cause of failure.
- Do not wash the surface of product with alcohol, benzene, thinner, etc.
- Please avoid listening with earphone or product operation during driving or walking because of the risk of traffic accident.

2. Product composition

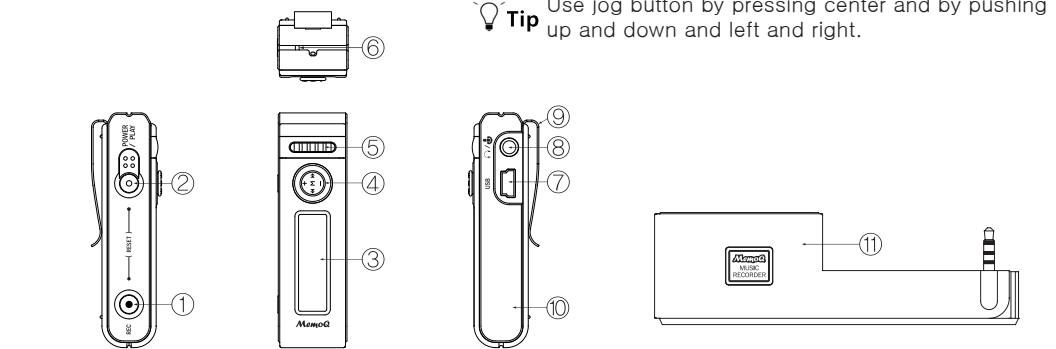
Caution : Be sure to check components before using product.

Basic composition



3. Name of each part

Tip Use jog button by pressing center and by pushing up and down and left and right.



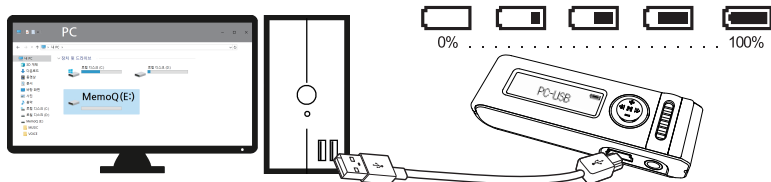
- ① Recording button ② Power/Play button ③ LCD screen ④ Jog(Mode) button ⑤ Built-in speaker
⑥ Microphone ⑦ USB terminal ⑧ External mic/Earphone terminal ⑨ Clip ⑩ Main body ⑪ Auxiliary battery pack

4. Preparation before use (charging and device setting)

- This product has built-in rechargeable battery.
- Connect USB cable into the USB terminal of product body and the USB port of PC or charger(option).
- You can check charging status by the battery icon displayed on LCD screen.

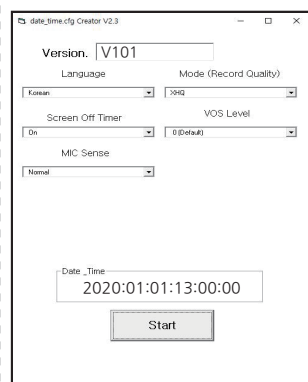
Tip -It takes about 2 hours for battery to be charged completely.

Caution : When you use charger(option), please check whether rated voltage is 5V.



Changing time setting and sound quality setting

- (Instructions of Time Setup program) ① After connecting USB cable into the USB terminal of PC, perform by double-clicking 'TIME SETUP' program saved in product.
② After adjusting each setting indicated in performed program suitably, press START button and the file of DATA_TIME.CFG is created.
③ Separate product from PC and setting value is saved.



(Window of Time Setup program)

Setting value indicated in bracket [] is basic value.
If memory is initialized, it is set to basic value.

- LANGUAGE : [KOREAN], ENGLISH, JAPANESE
- MODE(Recording sound quality) : PCM(no compression original sound) [XHQ](High sound quality), HQ(Middle sound quality), SP(Long time sound quality), LP(Ultra long time sound quality)
- SCREEN OFF TIMER : [ON], 60sec, 30sec, 10sec, 3sec
- MIC SENSE : HIGH, [NORMAL], LOW
- VOS LEVEL : You can set detection level in sound detection recording.

-2	-1	0	+1	+2
very insensitive	insensitive	basic setting	sensitive	very sensitive

- Caution : It is set to the date and time set in PC. (It is set to the time to click Start button and at the time to separate product.)
- Caution : If battery is discharged, date and time is initialized and perform time setting again after charging for use.

WARRANTY CARD

Product name	Digital voice recorder (MEMOQ)
Model name	MR-750
Date of purchase	
Place of purchase	
Purchasing price	
Telephone number	
Others	
Warranty period	One year from purchasing date
Customers	
Name	
Address	
Telephone number	

ESONIC CO., LTD.
MEMOQ
Made in Korea

Product Specification

Model No : MR-750	Memory	8GB	16GB	32GB
Recording Time per Mode	PCM	About 24Hrs	About 48Hrs	About 96Hrs
	XHQ	About 144Hrs	About 288Hrs	About 576Hrs
	HQ	About 288Hrs	About 576Hrs	About 1152Hrs
	SP	About 576Hrs	About 1152Hrs	About 2304Hrs
	LP	About 1152Hrs	About 2304Hrs	About 4608Hrs
Hours of Battery Use	REC.	PCM, XHQ : About 12Hrs / HQ, SP, LP : About 16Hrs		
Max Number of Recording Files		9,999 files		
Charging time		About 2Hrs		
Available maximum output	Earphone	3.5mW+3.5mW / 32ohms		
	Speaker	450mW / 8ohms		
Dimension	Recorder	(W) 65.5 x (H) 19.3 x (D) 15.3mm		
	Connected with the auxiliary battery pack	(W) 107.5 x (H) 36.3 x (D) 15.3mm		
Weight	Recorder	18.3g		
	Auxiliary battery pack	22g (excluding the battery)		
Operating environment		0°C~40°C		
Accessories	Earphone, USB cable, Battery pack, manual, Clip			

CHARGED SERVICE

- Malfunction caused by careless handling when using.
- Malfunction caused by user's modification of the product.
- Malfunction caused by act of god, such as fire, salt, flood, earthquake and etc.
- In case that the warranty period has been expired.

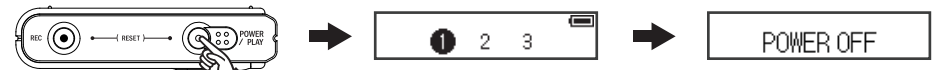
5. Power On/Off

Turning on power



- ① Press the button of POWER/PLAY for 3 seconds at length. ② The logo of MEMOQ is displayed. ③ Firmware version is displayed in sequence. It is moved to stop screen after displaying firmware.

Turning off power



- ① In the state of power-on, press the button of POWER/PLAY for 3 seconds at length. ② It starts countdown. ③ "POWER OFF" is displayed after 3 seconds and then power is turned off.

Recording and playing back by using external power (PC, Charger)

- When product is connected to PC or adaptor, all ongoing operations stop and PC-USB or CHARGING.. is displayed.
- At this time, recording starts by pressing recording button more than 3 seconds at length, or it is moved to stop screen by pressing play button more than 3 seconds at length.
- After this, you can use it in the same instructions with main body.

6. Explanation on LCD screen display

Stop screen Sound detection recording Current time

Recorded file name VOS AM 12:34 Battery remains
Recorded date and time R-00001_20010123

In recording Recording sound quality Level meter

Internal/external mic icon XHQ 00:00:01 VOS OFF R00001 Sound detection recording(ON/OFF)
Mic sensitivity File number being recorded
Recording time

In playing Repeat setting Progress indication line

Play icon File number being played
Play speed icon 1.0 00:00:01 00001 00100 Total file number
Play time

7. Recording

- Recording in the state of power-off: When you press recording button more than 3 seconds, power is turned on and recording starts right away.
- Recording in the state of power-on: When you press recording button in short, recording starts.



- (The state of power-off)-at length After displaying "Internal mic" on LCD screen, recording starts.
(The state of power-on)-in short

- To stop recording, press recording button in short again.



- When you press play button during recording, recording pauses and when you press it again, recording progresses subsequently.

- As internal mic is closer to a sound source, recording quality gets better.
- Recorded file is created in order from R-00001, "year/month/date/hour/minute" is displayed after number. (General recording:R-00001_2001011200_REC.mp3, Sound detection recording(VOS):R-00001_2001011200_VOS.mp3)
- In recording long time, it is divided in unit of 5 hours and saved.
- You can change the setting of mic sensitivity by pushing jog button to the direction of +/- at length during recording. (low mic sensitivity, normal mic sensitivity, high mic sensitivity)
- If battery is used out during recording, recording in progress is saved automatically and power is turned off.

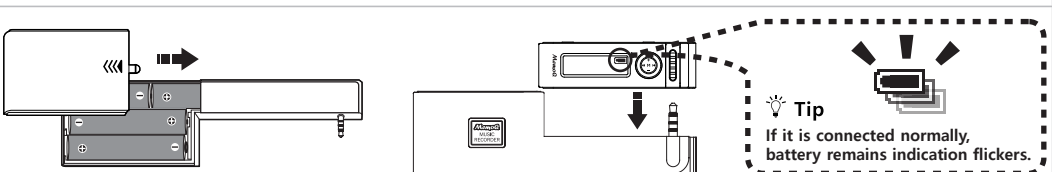
8. Setting sound detection recording (VOS)

- Sound detection recording(VOS) : When there is no sound during recording, it pauses, and when sound is detected after this, recording starts again.
- If there is no sound in sound detection recording, VOS icon flickers.



- In the state of stop screen, press mode button(M) at length(about 5 seconds) to change the setting of sound detection recording(VOS).
- Caution : In case of sound detection recording(VOS), the time of saved recording file differs according to detected sound.
Caution : Even though you use sound detection recording(VOS), hours of battery use are not increased.
Caution : You can not change the setting of mic sensitivity during sound detection recording(VOS).

9. How to connect auxiliary battery pack (long hours of recording)



- Picture of battery combination
 - Picture for the connection of auxiliary battery pack
- After inserting batteries(AAA, 4pcs.) into auxiliary battery pack according to direction, combine it with main body like picture ②, and charging of recorder starts.
 - In case of using auxiliary battery pack, continuous recording is possible for about 5 days (standard of HQ, SP, LP).
- Caution : Auxiliary battery pack is for charging the built-in battery of main body, and it can be used after some minutes in case of complete exhaustion.

10. Recording by external input

Tip In case of recording by external input, low mic sensitivity and middle level meter makes the clearest recording.

1 Recommended recording sensitivity : low

Connecting audio cable (recording of external device)

2 Recommended recording sensitivity : normal

Connecting ear mic (recording of mobile phone talks)

3 Caution : The design of telephone adaptor can be changed without prior notice.
Caution : keyphone, internet phone or some models of telephone can not be recorded.
Recommended recording sensitivity : low

Connecting telephone adaptor (recording of telephone talks)

- Accessories required for recording by external input are optional. (audio cable, ear mic, pin mic, telephone adaptor)

⚠ Caution : In case of recording by external input, if earphone is connected, it is recorded with silence.

⚠ Caution : If external input device (audio cable/external mic) is connected, sound does not come out even in playback.

1

Press mode button(M) at length.

2

Internal MIC ↔ External MIC

- How to set internal mic / external mic

1 Press mode button(M) more than 3 seconds during recording, and internal mic / external mic is changed. (Only in case that external input device is connected to mic/earphone terminal)

Tip You can check the current status of mic with internal mic icon and external mic icon during recording.

11. Playing

1

At the stop screen, select the file you want by pushing jog button to the direction of previous(◀) / next(▶) in short.

2

1 Play the selected file by pressing play button in short.
2 If you want to stop playing, press play button in short again.

12. Setting section repeat (A ↔ B)

1 Select the starting point(A) of section repeat by pushing mode button(M) in short during playback.
2 Select the ending point(A) of section repeat by pushing mode button(M) in short. After this, it is played with section repeat from starting point(A) to ending point(B).
3 If you press mode button(M) once more, section repeat is released.

Tip Operable function in playing

- You can move to previous file / next file by pushing jog button to the direction of previous(◀) / next(▶) in short during playback.
- You can rewind / rewind fast by pushing jog button to the direction of previous(◀) / next(▶) at length during playback.
- You can adjust the volume by pushing jog button to the direction of (+) / (-) in short during playback. (volume 0~31)
- You can adjust play speed by pushing jog button to the direction of (+) / (-) at length during playback. (0.8 speed, 0.9 speed, 1.0 basic speed, 1.1 speed, 1.2 speed)

13. Deleting

1 **Selecting file**

At the stop screen, select the file you want to delete by pushing jog button to the direction of previous(◀) / next(▶) in short.

⚠ Caution : Data deleted once can not be restored.

2 **Deletion confirmation**

1 Move to the deletion menu of selected file by pushing jog button to the direction of (+) at length.
2 In case of progressing deletion, press mode button(M) in short.
3 Select the item you want by pushing jog button to the direction of (+) / (-) in short.

Deletion cancellation

If you want to cancel deletion, push jog button to the direction of previous(◀) in short.

3 **Deletion practice**

In case of progressing deletion, after selecting "Yes", press mode button(M) in short.

FILE DELETE

14. Initializing(formatting) memory

⚠ Caution : In formatting, 'Time Setup' is deleted together and keep the program of 'Time Setup' separately for use.

1 **Entering the menu of initialization**

At the stop screen, move to the menu of memory initialization by pushing jog button to the direction of (-) at length (about 5 seconds).

⚠ Caution : Data deleted once can not be restored.
Caution : all files and setting values are initialized.

2 **Initialization confirmation**

1 Perform initialization by pushing mode button(M) in short.
2 Select the item you want by pushing jog button to the direction of (+) / (-) in short.

Initialization cancellation

If you want to cancel initialization, push jog button to the direction of previous(◀) in short.

3 **Initialization practice**

In case of progressing initialization, after selecting "Yes", press mode button(M) in short.

It moves to the screen of "no file"

15. Connecting USB into PC

- Playback, copy, deletion or memory format is possible by connecting PC and main body with USB cable.
- ⚠ Caution : In case of progressing memory format in PC, progress it by file system FAT32 for hereafter normal operation.
- ⚠ Caution : In formatting, the program of 'Time Setup' is deleted and keep the program of 'Time Setup' separately.

'Time setup' program Recorded file folder

16. Resetting

- If problems as main body does not work or power is not turned off occur, you can reset the system of main body.

1 Press play button and recording button at the same time, and system is reset.

- ⚠ Caution : If you reset it during recording, recording in progress is not saved and lost.
- ⚠ Caution : Even though you reset it, recording files and data saved before are not deleted.

<Picture example>