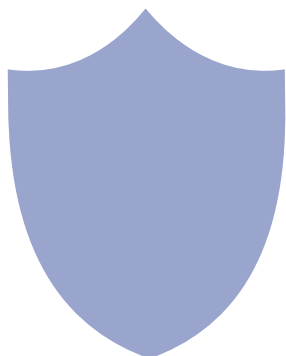


# Tuya Wall Lamp Security Wi-Fi Camera

User Manual

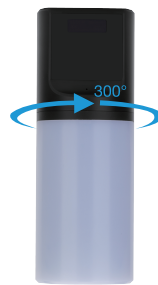
Version: Mar, 2023



Size: 173x60mm



Normal status with bracket



Place device on table

## Lamp Status:

When there is a motion, it lights up 1 minute then off. If motion is going on, it keeps on; Once no motion, it goes off.

Second, it supports motion detect push alarm notification, cycle recording and work while charging.

Third, it can be used as a daily use indoor wall lamp, which can be lighted on while the PIR detect motions. (When there is a motion, it lights up 1minute then off.)

**Usages:** Nanny camera, Home/ Shop/ Office/ Warehouse surveillance camera.....

**Warning :** " illegal use is not allowed! Or, there will be consequences to bear! "

## In the box:

- 1 x Camera Unit
- 1 x Micro SD Card Reader
- 1 x USB Cable
- 1 x User Manual
- 1 x Power Adapter
- 1x Universal Bracket

## Wi-Fi Camera Connection Setting

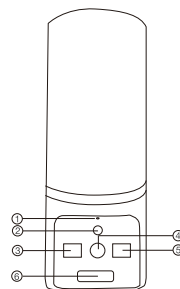
Step1: "Tuya Smart" App

1. Scan below QR code or search and download free APP named < Tuya Smart > in Apple APP store, Google play or Electronic market, and install it;



App: Tuya Smart

## Product structure



- ① Microphone
- ② Light sensor
- ③ Invisible night vision leds
- ④ Camera
- ⑤ Invisible night vision leds
- ⑥ PIR sensor

## Quick guide of Wi-Fi camera function:

1.Download & Install Free App <Tuya Smart > from App Store or Google Play;

**Tips:** Please allow " Tuya Smart " to notification, Bluetooth and location while using the App.

2.Enter App, select your region and register your accounts;

**Tips:** If a code doesn't arrive, please check the spam folder first.

3.Insert micro SD card --> Turn on back ON/OFF switch (wait around 20seconds till the blue indicator turns from solid to blink); Press Reset key 8 seconds till a dingdong sound(wait around 30 seconds till the blue indicator turns from solid to blink and ready for pairing WiFi);

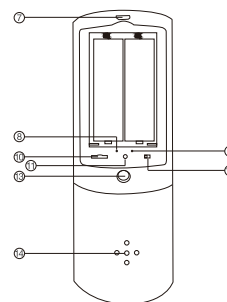
4.Open APP Tuya Smart >> Add devices or Top right "+" >> Camera&Clock >> Smart camera (Wi-Fi) . Tick " Make sure the indicator is flashing quickly, or a prompt tone is heard." >> Next. Click " ← " to select the local router WiFi, then input password. >> Next.

5.Please scan the QR code from 15 to 20cm away. Once you heard a prompt, click "I Heard a Prompt". Device Binding Successful and online now.

## Overview:

The Tuya Wall Lamp Security Wi-Fi Camera, is a daily use indoor wall lamp and integrate with a high tech powerful 1080P smart camera inside for daily home / office security use etc.

First, it can be used for watching live streaming video day and night (night vision around 5 meters), or taking photo and video by APP in smart-phone remotely after WiFi connected;



- ⑦ USB charging port
- ⑧ WiFi indicator
- ⑨ Charging indicator
- ⑩ Micro SD card slot
- ⑪ Reset key
- ⑫ ON/OFF switch
- ⑬ Bracket connect part
- ⑭ Camera speaker

Step 2: Take off side cover --> Insert micro SD card --> Turn on back ON/OFF switch (wait around 20seconds till the blue indicator turns from solid to blink);

Step 3:Connect device with Wi-Fi

1. Press Reset key 8 seconds till a dingdong sound(wait around 30 seconds till the blue indicator turns from solid to blink and ready for pairing WiFi);

## Reset steps:

1.Turn on device wait around 20seconds till the blue indicator turns from solid to blink.

2.Long press reset key around 8 seconds till a "dingdong" sound, wait around 30 seconds till the blue indicator turns from solid to blink. The reset is done.

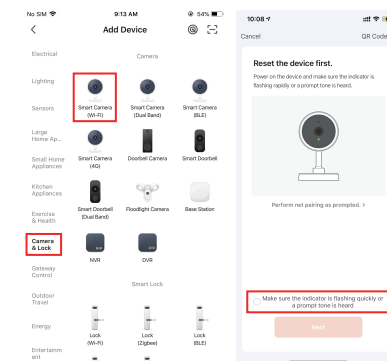
## Wi-Fi indicator tips:

Blink blue when pairing with WiFi;  
Solid blue when WiFi paired; (Can be turned off in App, Setting>Basic Function Settings>Status Indicator)

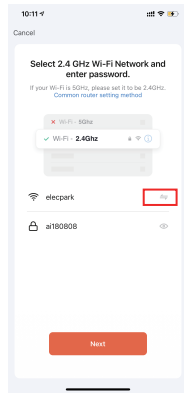
## Charging indicator tips:

Solid red when charging, and off when fully charged.

2. Open APP Tuya Smart >> Add devices or Top right "+" >> Camera&Clock >> Smart camera (Wi-Fi) . Tick " Make sure the indicator is flashing quickly, or a prompt tone is heard." >> Next.

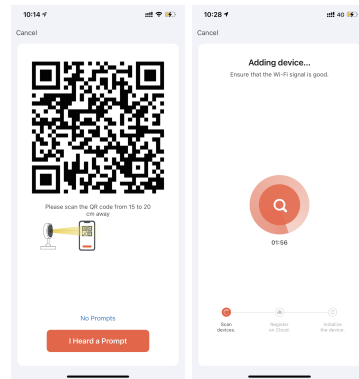


3. Click “↔” to select the local router WiFi, then input password. >> Next.



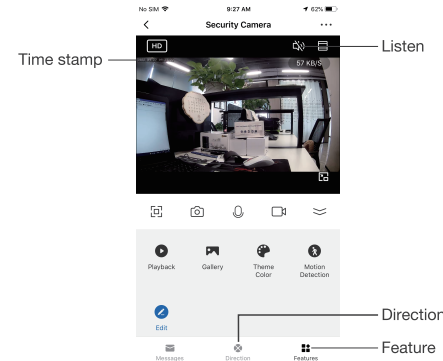
12

4. Please scan the QR code from 15 to 20cm away. Once you heard a prompt, click "I Heard a Prompt". Device Binding Successful and online now.



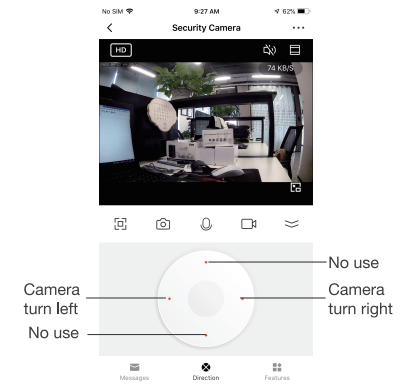
13

## APP Introduction

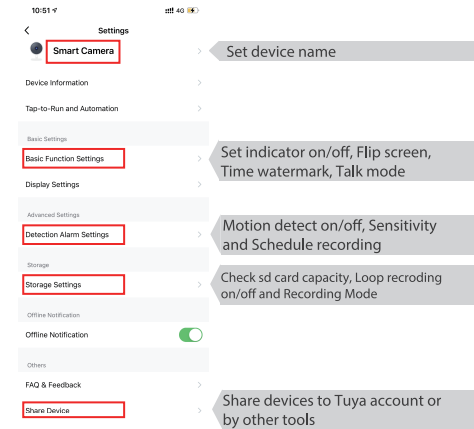


Features: Main functions of the camera  
 Direction: Control the PAN rotate of camera lens and laser tease

14



15



16

## Specification

Resolution	2 Mega CMOS
Video pixel	1920*1080
Frames	Max 25fps
Compressed format	H.264
View angle	145 Degree
Type of memory card	TF card>=Class 4/10 and HC marked
Maximum capacity of memory card	128 GB
Mobile phone operation system	Android/iOS
Compatible router	2.4G and Mobile hotspot
Two way talking	Yes
Lamp power consumption	150mA
Power consumption	250 mAh
Power consumption with night vision	450 mAh
Charging current	420 mA
Battery	Default 1 piece, 2500mA
Battery life	Around 4 / 8 hours
Charging time	Around 6hours
Power adapter	5V2A

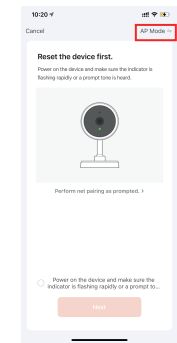
17

## FAQ

- Q: Why videos recorded in SD card can't be read by PC?  
 A: 1) This is Tuya patent to protect recorded files by encryption format.  
 A: 2) If need to check videos in card, enter App > playback: Select video date, record or screenshot needed moments. Then check at App album.
- Q: What does the device do when WiFi off?  
 A: Keep searching WiFi signal all the time; If WiFi on, it will be connected to WiFi automatically.
- Q: Any other way to connect device with Wi-Fi?  
 A: 1) Press Reset key 8 seconds till a dingdong sound(wait around 30 seconds till the blue indicator turns from solid to blink and ready for pairing WiFi);

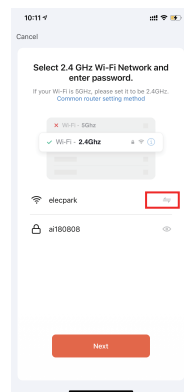
18

A: 2) Open APP Tuya Smart >> Add devices or Top right "+"  
 >> Security & Video surveillance >> Smart camera (Wi-Fi) .  
 Click top right "↔" to select AP mode. Tick "Power on the device and make sure the indicator is flashing rapidly or a prompt tone." >> Next.



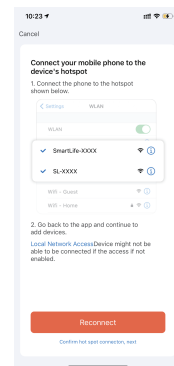
19

A: 3) Click “↔” to select the local router WiFi, then input password. >> Next.



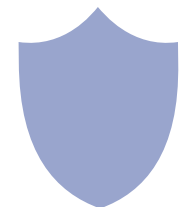
20

A: 4) Connect your mobile phone to the device's hotspot named "SmartLife-xxxx, or SL-xxxx". Click "Confirm hotspot connection, next" Then device is being added, and online soon.



21

4. Q: Where to get more info about Tuya Smart App?  
 A: Pls visit developer.tuya.com , then Documentation > App Development > All-in-One App > Smart Life > User Guide



The end!