


Cautions in use

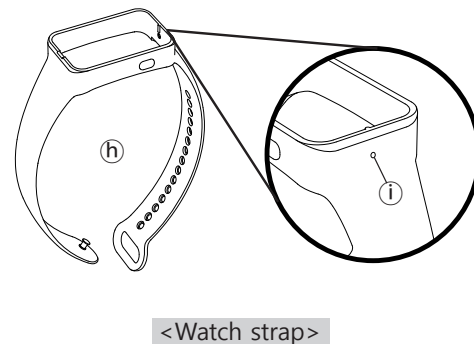
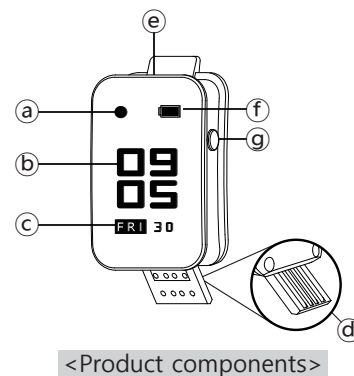
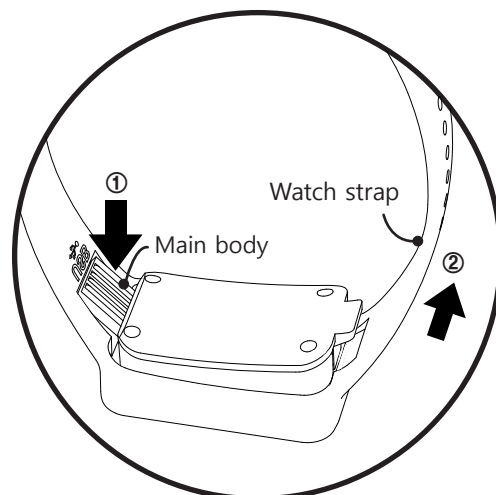
- * We are not responsible for the loss of recordings caused by wrong usage, A/S, other reasons.
- * We are not responsible for the damage or third party's claims caused by the usage of this product.
- * Disassembly, remodeling, impact, the usage in place of low temperature, high temperature, high humidity can be the cause of failure.
- * Please save the important recordings into PC frequently.


Water resistance

- * This product supports water resistance.
- * For normal use of water resistance, read the following carefully.
- * Failure to comply with the following may result in damage to the product or no performance guarantees.
- * Avoid exposure to contaminated water, chemicals etc.
- * Do not use products when diving or water sports.
- * Don't put excessive water pressure on the product. (For example, water from a faucet)
- * If the product is damaged or damaged by an external impact, the water resistance may deteriorate.
- * Don't take it apart yourself. Damage to the water resistance may occur.
- * If the product is submerged or the microphone is wet, smooth operation may be difficult. Dry the product completely before using it.

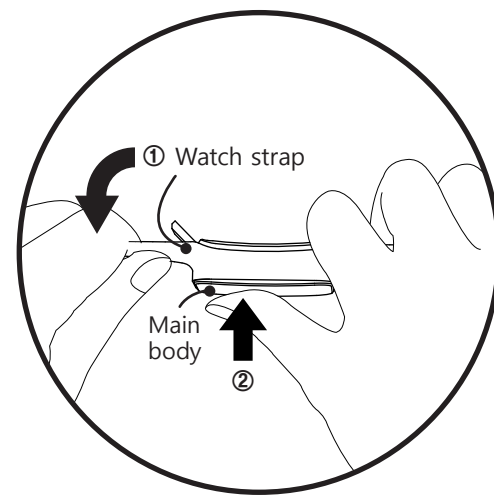
Name of each part & components

- a Recording sign b Time display c Day and date display d USB terminal
e Microphone f Battery Indicator g Recording button h Watch strap i Microphone hole


Installing and separating the watch strap


※Install the main body to watch strap.

1. Install the directions of body USB terminal(Ⓐ) and watch strap(Ⓗ) to be exactly the same.
2. Push the front of the main body from bottom to top.



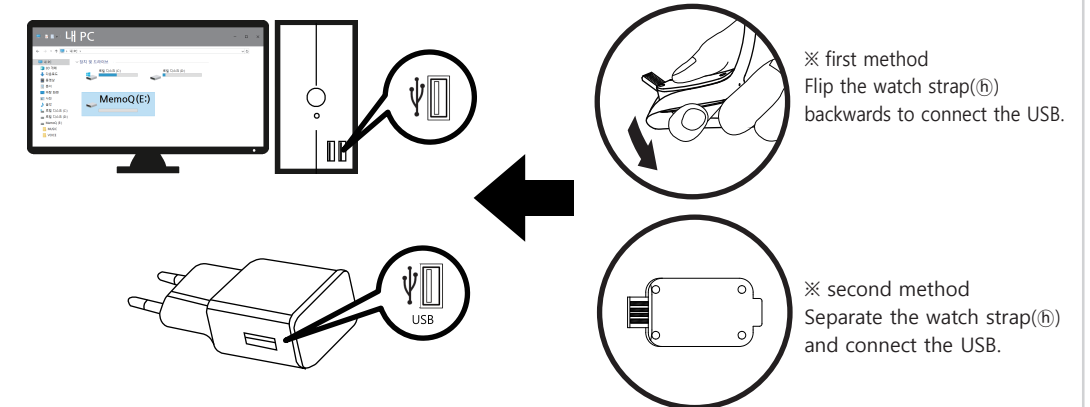
※Separate the main body from watch strap.

1. Bend the watch strap(Ⓗ) back.
2. Push the front of the main body outwards the watch strap(Ⓗ)

⚠ Caution : Do not overextend the watch strap Ⓗ. It may be deformed or damaged.

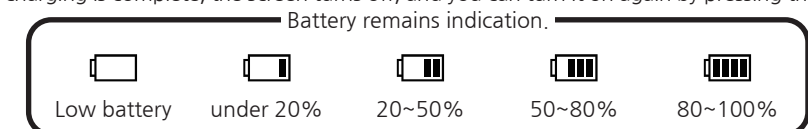

Charging

- * The product has a built-in battery and can be used after charging.
- * Charging starts when the product's USB terminal(Ⓐ) is connected to the PC's USB port or a charging adapter (optional).
- ⚠ Caution : Be sure to use a certified charging adapter (rated output DC5V/500mA or higher). Damage to the product due to a defective charging adapter may result in paid repair.



⚠ Caution :Charging will not start if the USB terminal(Ⓐ) is connected in the wrong direction.

- * During recording, you can check the remaining battery status according to the Battery indicator(Ⓕ) displayed on the watch screen.
- * When charging is complete, the screen turns off, and you can turn it on again by pressing the recording button.



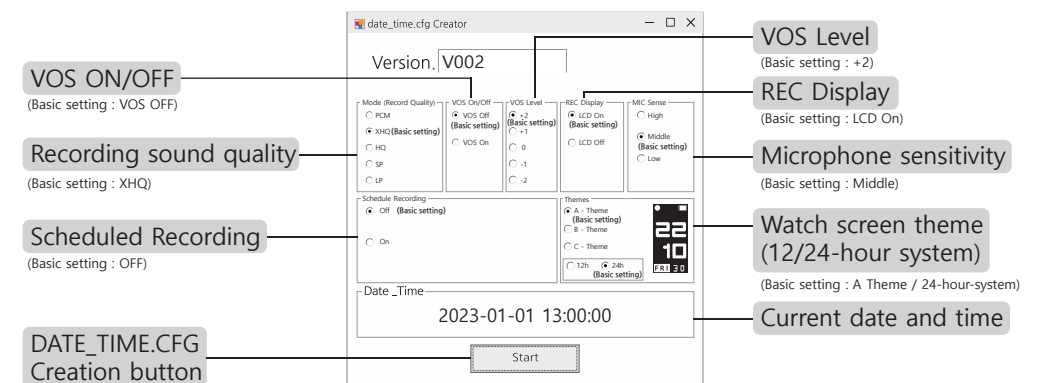
Connecting PC USB

- * When this device is connected into the USB port of PC, it is recognized as a "Removable disk (MEMOQ)", and copy, movement, deletion, playback of file is possible.
- * For playback, please use the music playback software of PC.

⚠ Caution : Do not connect to the PC USB port or charging adapter(option) when the USB terminal(Ⓐ) is wet.
⚠ Caution : When you separate product from PC, please be sure to perform "hardware safety removal". When you remove product from PC by force, fatal error on product can occur.


Setting the recording function
How to use time setting program

1. After connecting the product's USB terminal(Ⓐ) to the PC's USB port, run the "TIME SETUP" program stored in the product. The time setting program only works on Window OS. (not for Mac).



2. After checking the settings according to the usage environment, click the "START" button.
3. If the "DATE_TIME.CFG" file is normally created in the product, disconnect the product from the USB port to complete the setting.

⚠ Caution : The date and time set on the PC are displayed.
If the date and time are displayed differently, please check the PC settings.
⚠ Caution : If the product is not separated immediately after clicking the START button, a time error will occur as much as the delayed time.
⚠ Caution : If the product is not separated from the PC after clicking the START button, the setting will not be completed.

1. MODE (Record Quality)

- * Recording sound quality setting.
 - PCM(No compression : 705kbps/44.1kHz), XHQ(Ultra high sound quality : 128kbps/32kHz), HQ(High sound quality : 64kbps/16kHz), SP(Low sound quality : 32kbps/8kHz), LP(Long time sound quality : 16kbps/8kHz)

💡 Tip : Higher recording quality improves sound quality, but increases memory and battery usage.

2. VOS ON/ OFF

- * VOS Recording : If there is no sound during recording, the recording pauses, and when sound is heard, the recording resumes.
 - VOS OFF ,VOS ON

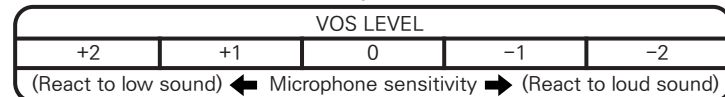
💡 Tip : Unnecessary silent sections are not recorded, saving listening time and memory usage.

⚠ Caution : The battery life is the same regardless of VOS ON/OFF, the difference is that it creates a file by saving only the part where the sound is detected.

⚠ Caution : There is a risk that it may not be recorded depending on the volume, we recommend VOS OFF recording for important recordings.

3. VOS LEVEL

- * Set the volume required to resume recording from a pause during VOS recording.
 - +2 Very sensitive(About 52dBA), +1 Sensitive (About 55dBA), 0 Normal (About 58dBA), -1 Insensitive(About 61dBA), -2 Very insensitive(About 64dBA)



💡 Tip : Change the VOS LEVEL setting after testing it according to the location and situation.

4. REC Display

- * Set the screen to always on during recording or to turn off after a certain period of time.
 - LCD On (Screen always on while recording)
 - LCD Off (Screen turns off after 20 seconds while recording)

⚠ Caution : When set to LCD On (Screen always on while recording), the maximum battery usage time is different.

5. MIC Sense

- * Set the microphone sensitivity
 - High sensitivity, Middle sensitivity, Low sensitivity

💡 Tip : When the recording sound is low, set it to the 'High', and when the recording sound is loud, set it to the 'Low'. Please change it after testing it to match the sound.

6. Scheduled recording

- * Recording starts automatically once a day at a set time.

Schedule Recording		
<input type="radio"/> Off	Start Time :	hour : 13 : minute : 45
<input checked="" type="radio"/> On	Duration :	hour : 1

- OFF(scheduled recording off), ON (scheduled recording on)
- Start time : Time to start scheduled recording (24-hour system), Minute (60 minutes)
- Duration : Time to continue scheduled recording (1/2/5/10/20 hours)

⚠ Caution : PCM mode can't be selected during scheduled recording.

⚠ Caution : VOS recording can't be used during scheduled recording.

⚠ Caution : If the scheduled recording set time overlaps during normal recording, the scheduled recording will be ignored.

⚠ Caution : If the date and time settings are not correct, scheduled recording may malfunction.

⚠ Caution : If the battery is low, scheduled recording will not work. Please use it after charging.

7. Theme

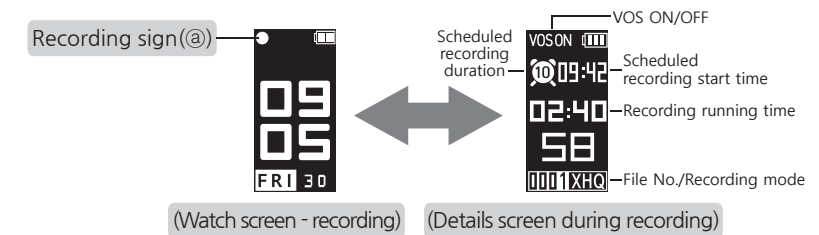
- * Set the watch display style.
 - A, B, C
 - 12-hour system / 24-hour system

**Check the watch screen**

1. If you press the recording button(Ⓜ) for about 2 seconds, the watch screen will be displayed for 5 seconds.

**Start recording**

1. While the watch screen is displayed, press the recording button(Ⓜ) once more briefly to start recording.



2. If you press the recording button(Ⓜ) briefly during recording, the detailed recording screen appears, and if you press the recording button(Ⓜ) once more, the watch screen appears.
3. During recording the watch screen darkens or turns off automatically according to REC display setting.
4. To turn on the screen again, you can display the watch screen by briefly pressing the recording button(Ⓜ).

End recording

1. During recording, if you press and hold the recording button(Ⓜ) until the OFF screen is displayed, the recorded file is saved and the power is turned off.

- Recorded files are created sequentially from R-00001 in the Voice folder, and up to 9,999 files can be created.
- It is saved in R-00001_2301011200 (YY/MM/DD/HH/MM) format, and the file names are classified according to Normal Recording (REC)/VOS Recording (VOS)/Scheduled Recording (SCHED).

Ex)

┌	R-00001_2301011200_REC.MP3 (Normal recording)
├	R-00001_2301011200_VOS.MP3 (VOS recording)
└	R-00001_2301011200_SCHED.MP3 (Scheduled recording)

⚠ Caution : If the battery is discharged, the set date & time will be reset to 00:00 on January 01, please use it after resetting it after charging.

⚠ Caution : If the watch strap(Ⓜ) and the body are not properly installed, the microphone hole(Ⓜ) may be covered and the microphone sensitivity may deteriorate.

⚠ Caution : If water or foreign matter gets into the microphone(Ⓜ), the sound may become low or recording may not be possible. Always dry and clean before use.

Specifications

Model	SR-600	
Memory	8 GB	16 GB
Recording time	PCM	About 24 hours
	XHQ	About 144 hours
	HQ	About 288 hours
	SP	About 576 hours
	LP	About 1152 hours
Hours of battery use	PCM	About 17 hours (LCD On) About 27 hours (LCD Off)
	XHQ	
	HQ	About 20 hours (LCD On) About 33 hours (LCD Off)
	SP	
	LP	
Charging time	1 hours	
Max recording files	9,999 files	
Size, Weight	(W)27.7 X (D)75.2 X (H)112.3mm, 27.2g	
Battery	3.7V, Li-Polymer, 180mAh	
Usage environment	Temperature : 0~40, Humidity : 20~80%	
Component	Watch, Watch strap, Manual	

Warranty Card

Product name	Voice Recorder
Model No.	SR-600
Purchasing Date	
Purchasing Place	
Telephone No	
Others	
Warranty period	1 Year
Customer Name	Name
	Address
	Telephone

Paid service

- Defect caused by careless use.
- Defect caused by user's internal modification.
- Defect caused by natural disasters like fire, salt damage, flood, earthquake, etc.
- Defect out of warranty period.
- If parts need to be replaced.

**Detailed explanation of time setting program**