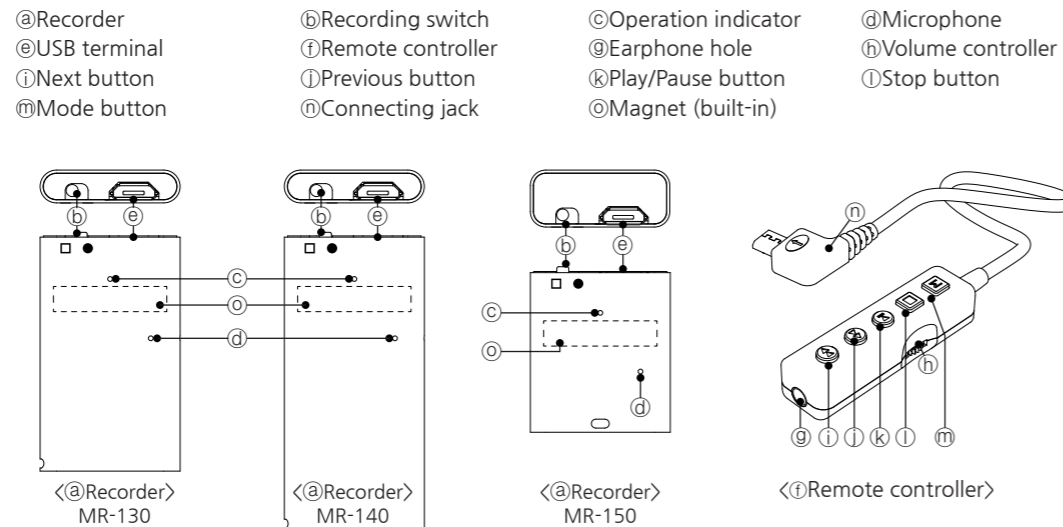


### Cautions in use

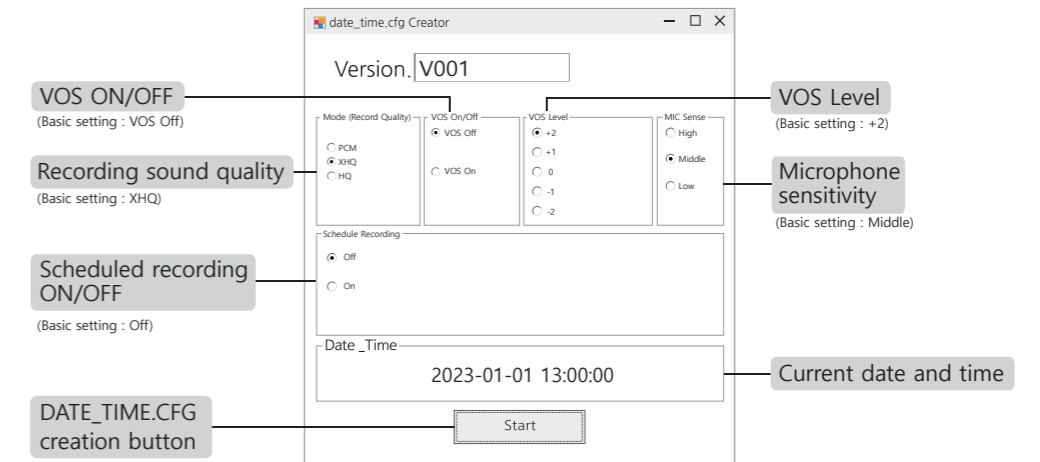
- \* We are not responsible for the loss of recordings caused by wrong usage, A/S, other reasons.
- \* We are not responsible for the damage or third party's claims caused by the usage of this product.
- \* Disassembly, remodeling, impact, the usage in place of low temperature, high temperature, high humidity can be the cause of failure.
- \* Please save the important recordings into PC frequently..
- \* Design and accessories are subject to change without notice to improve product quality.

### Name of each part



### Time setting program

1. Connect a USB cable to the product's Ⓒ USB terminal, connect it to the PC's USB port, and run the "TIME SETUP" program stored on the product.



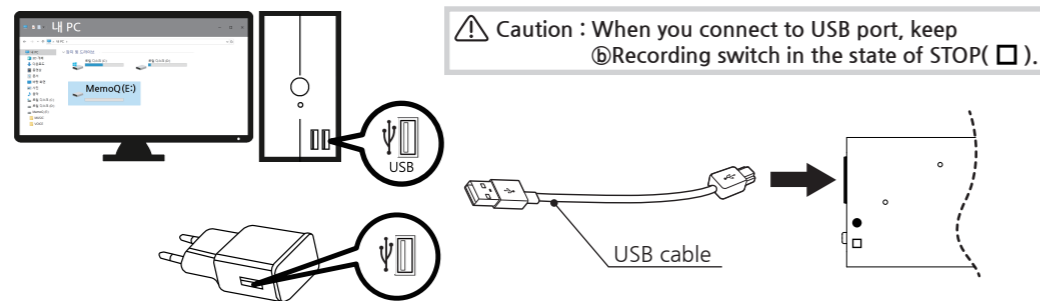
2. After checking the settings according to the usage environment, click the "START" button
3. If the "DATE\_TIME.CFG" file is normally created in the product, disconnect the product from the USB port to complete the setting.

- ⚠ Caution : The date and time set on the PC are displayed. If the date and time are displayed differently, please check the PC settings.
- ⚠ Caution : If the product is not separated immediately after clicking the START button, a time error will occur as much as the delayed time.
- ⚠ Caution : If the product is not separated from the PC after clicking the START button, the setting will not be completed.

### Charging

- \*The product has a built-in battery and can be used after charging.
- \*Charging starts when the product's USB terminal(Ⓒ) is connected to the PC's USB port or a charging adapter (optional).

- ⚠ Caution : Be sure to use a certified charging adapter (rated output DC5V/500mA or higher). Damage to the product due to a defective charging adapter may result in paid repair.



(Charging time : 1hour)

- \* During charging, the Ⓒ Operation indicator flashes RED ► BLUE ► GREEN depending on the battery level and the GREEN LED is turned on when charging is completed.

### Battery remains indication

- \*When the product is disconnected from the PC or USB charging adapter, the Ⓒ Operation indicator flashes in three stages for 5 seconds, depending on the battery level
- \*During recording or standby with the remote controller connected, press the Ⓚ Mode button briefly and the Ⓒ Operation indicator flashes in three stages for 5 seconds, depending on the battery level

Operation indicator	RED	BLUE	GREEN
Battery remains	0~30%	30~70%	70~100%

### Connecting PC USB

- \*If you keep the ⒸRecording switch in state of STOP(□) and connect it to the USB port on your PC, it is recognized as a "Removable disk (MEMOQ)", and copy, movement, deletion, playback of file is possible.
- \*For playback, please use the music playback software of PC.
- ⚠ Caution : When you connect to USB port, keep ⒸRecording switch in the state of STOP(□).
- ⚠ Caution : When you separate product from PC, please be sure to perform "hardware safety removal"
- ⚠ Caution : When you remove product from PC by force, fatal error on product can occur.

### Detailed explanation of time setting program

#### 1. MODE (Recording Quality)

- \* Recording sound quality setting.
  - PCM(No compression : 705kbps/44.1kHz), XHQ(Ultra high sound quality : 128kbps/32kHz), HQ(High sound quality : 64kbps/16kHz)

Tip : Higher recording quality improves sound quality, but increases memory and battery usage.

#### 2. VOS ON/OFF

- \* VOS Recording : If there is no sound during recording, the recording pauses, and when sound is heard, the recording resumes.
- VOS OFF, VOS ON

Tip : Unnecessary silent sections are not recorded, saving listening time and memory usage.

⚠ Caution : The battery life is the same regardless of VOS ON/OFF, the difference is that it creates a file by saving only the part where the sound is detected.

⚠ Caution : There is a risk that it may not be recorded depending on the volume, we recommend VOS OFF recording for important recordings.

#### 3. VOS LEVEL

- \* Set the volume required to resume recording from a pause during VOS recording.
  - +2 Very sensitive(About 52dBA), +1 Sensitive (About 55dBA), 0 Normal (About 58dBA), -1 Inensitive(About 61dBA), -2 Very insensitive(About 64dBA)

VOS LEVEL				
+2	+1	0	-1	-2
(React to low sound) ←		Microphone sensitivity → (React to loud sound)		

Tip : Change the VOS LEVEL setting after testing it according to the location and situation.

#### 4. MIC Sense

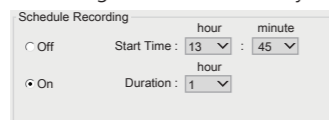
- \* Set the microphone sensitivity
  - High sensitivity, Middle sensitivity, Low sensitivity

Tip : When the recording sound is low, set it to the 'High', and when the recording sound is loud, set it to the 'Low'. Please change it after testing it to match the sound.

### Detailed explanation of time setting program

#### 5. Recording

- \* Recording starts automatically once a day at a set time.



- OFF, ON
- Start time : Time to start scheduled recording (24-hour system), Minute (60 minutes)
- Duration : Time to continue scheduled recording (1/2/5/10/20 hours)

- ⚠ Caution : PCM mode can't be selected during scheduled recording.
- ⚠ Caution : VOS recording can't be used during scheduled recording.
- ⚠ Caution : If the date and time settings are not correct, scheduled recording may malfunction.

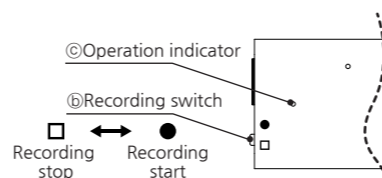
#### Scheduled recording

1. To perform scheduled recording, the Recording switchⓅ must be in the STOP position(□).
2. Recording starts automatically at Start time(Time to start scheduled recording) once a day, and stops automatically after recording as much as Duration(Time to continue scheduled recording).

- ⚠ Caution : When scheduled recording starts, the Recording LEDⓄ is not displayed
- ⚠ Caution : To force an in-progress scheduled recording to end, move the Recording switchⓅ to Recording(●) and then move to STOP (□) again.
- ⚠ Caution : When connected to the charging adapter(option) or PC USB port, scheduled recording in progress is stopped.
- ⚠ Caution : Scheduled recording does not start while charging or using a PC connection.

#### Recording

1. When you move ⓅRecording switch to the direction of (●), after about 5 seconds, the Operation indicatorⓄ lights up and recording starts.
2. When you move ⓅRecording switch to the direction of (□), recording is saved and powered off



- \* Recorded files are created sequentially from R-00001 in the Voice folder, and up to 9,999 files can be created.
- \* It is saved in R-00001\_2201011200 (YY/MM/DD/HH/MM) format, and the file names are classified according to Normal Recording (REC)/VOS Recording (VOS)/Scheduled Recording (SCHED).

Ex) 

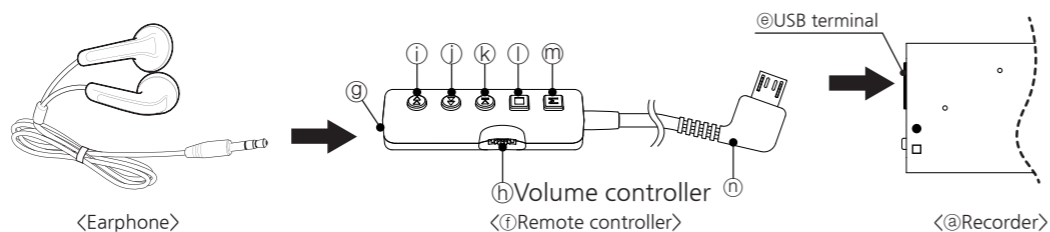
- R-00001\_2301011200\_REC.MP3 (Normal recording)
- R-00001\_2301011200\_VOS.MP3 (VOS recording)
- R-00001\_2301011200\_SCHED.MP3 (Scheduled recording)

- ⚠ Caution : If the battery is discharged, the set date & time will be reset to 00:00 on January 01, please use it after resetting it after charging.

### Recording for a long time

(use of external power)

- \* If you move the ⓅRecording switch to (●) to start recording and then connect it to a PC or USB charger, you can record for a long time.
- \* You can record up to the recording time per memory.



### Playing recording files

1. Connect the earphone to the ⓄEarphone hole and the ⓅConnecting jack on the remote controller to the ⓄUSB terminal of the product.
  2. If the ⓄPlay/Pause (Ⓞ) button is pressed for more than 3 seconds, the ⓄOperation indicator will flash a blue LED and playback will begin after the "Beep" sound.
- \* During playback, press the ⓄPlay/Pause button (Ⓞ) briefly to pause playback and press the ⓄPlay/Pause button (Ⓞ) again to resume playback.
  - \* When the ⓄStop button (□) is pressed during playback, the Blue LED on the ⓄOperation indicator stops flashing and the playback stops.
  - \* If the remote controller is removed during playback or standby, or if there is no operation for a minute in the standby state, the power is automatically turned off.

- ⚠ Caution: Playback is not available during recording (●).

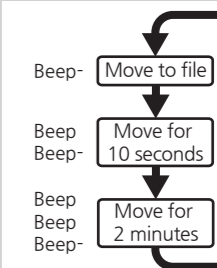
Tip : In the case of file having long recording time, playback on PC is recommended.

# How to record

### Moving files

- \* If you press the ⓄPrevious button (Ⓞ) during playback, it will be moved to the previous file or backwards 10 seconds or backwards 2 minutes according to the settings.
- \* If you press the ⓄNext button (Ⓞ) during playback, it will be moved to the next file or forward 10 seconds or forward 2 minutes according to the settings.
- \* Press and hold the ⓄPrevious button (Ⓞ) while standby to go to the first recording file and play it.
- \* Press and hold the ⓄNext button (Ⓞ) while standby to go to the last recording file and play it.

Tip : Press the ⓄMode button (Ⓞ) briefly during playback to set the file movement interval.



### Deleting files

1. When you press ⓄStop button (□) more than 5 seconds in the state of STOP (□), "Beep Beep" sound comes out and recorded contents are played back to confirm before deletion.
2. If the contents you want to delete are correct, please press briefly again ⓄStop button(□) within 10 seconds.

Tip : To cancel the deletion, press any button except the ⓄStop button(□), or if there is no operation for more than 10 seconds, the deletion will be canceled

3. After the "Beep~" sound, the file is deleted

- ⚠ Caution : Deleted file can not be restored.
- ⚠ Caution : Deleting files with the remote controller can cause you to accidentally erase important files. Caution is required when operating

When the ⓄMode button (Ⓞ) is pressed for more than 3 seconds in the STOP (□)state, the green and red LEDs flash alternately in the ⓄOperation indicator and enter setup mode.

#### Setting the recording mode

1. Whenever the ⓄPlay/Pause button (Ⓞ) is pressed, the Recording Mode changes sequentially as shown below after the "Beep" sound.



- ⚠ Caution : PCM recording mode cannot be selected during scheduled recording.

#### Setting the VOS recording

1. Whenever the ⓄStop button (□) is pressed, the VOS settings are changed sequentially as shown below after the "Beep" sound.



2. Press and hold the Ⓞ mode button (Ⓞ) for more than 3 seconds after the change to complete the setting.

- ⚠ Caution : VOS recording is not available when setting the scheduled recording.

#### Deleting all files (Format)

1. If you press ⓄNext button (Ⓞ) more than 10 seconds, "Beep" sound is heard through earphone and format is performed.
2. When the format is completed, "BEEP" sound is heard for 2 seconds.

- ⚠ Caution : Deleting All Files (Format) initializes all data and settings, including files and time-setting programs.

### Specification

Model	MR-130	MR-140	MR-150
Hours of battery use	PCM	abt 13 hours	abt 25 hours
	XHQ	abt 13 hours	abt 24 hours
	HQ	abt 15 hours	abt 28 hours
Playback time	PCM	abt 10 hours	abt 18 hours
	XHQ	abt 10 hours	abt 18 hours
	HQ	abt 10 hours	abt 18 hours
Recording time	Memory	8 GB	16 GB
	PCM	abt 24 hours	abt 48 hours
	XHQ	abt 144 hours	abt 288 hours
Charging time	PCM	abt 10 hours	abt 18 hours
	HQ	abt 288 hours	abt 576 hours
Max. recording files	9,999 files		
Size(mm), Weight	(W)23.25	(W)23.25	(W)23.50
	(D)38.85	(D)48.85	(D)26.8
	(H)5.45	(H)5.45	(H)9.60
Battery	8g	9.98g	9.10g
	3.7V, Li-Polymer 0.359Wh(MR-130) 3.7V, Li-Polymer 0.666Wh(MR-140,150)		
Usage environment	Temperature : 0~40, Humidity : 20~80%		
Component	User manual, Earphphone, Remote controller,USB cable, Strap		

### Warranty

Product name	Digital Voice Recorder
Model No.	MR-130,MR-140,MR-150
Purchasing date	
Purchasing place	
Telephone no.	
Etc.	
Warranty period	1 Year
Customer Name	Name
	Address
	Telephone

### Paid service

- Defect caused by careless use.
- Defect caused by user's internal modification.
- Defect caused by natural disasters like fire, salt damage, flood, earthquake, etc.
- Defect out of warranty period.
- If parts need to be replaced.