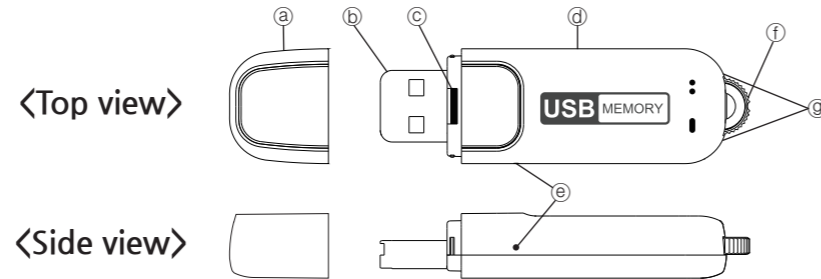


Cautions in use

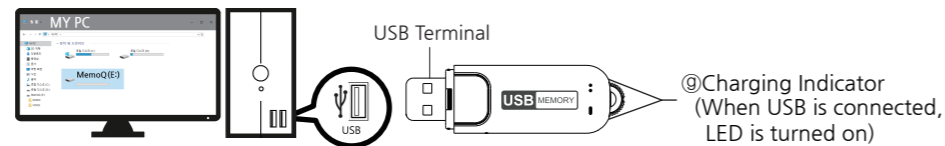
- * We are not responsible for the loss of recordings caused by wrong usage, A/S, other reasons.
- * We are not responsible for the damage or third part's claims caused by the usage of this product.
- * Please save the important recordings into PC immediately.

Name of each part

- ⒶCap ⒷUSB Terminal ⒸBattery Remains Indicator ⒹBody
ⒺMicrophone ⒻRecording Switch ⒼCharging Indicator



Charging the unit



- *This product has built-in rechargeable battery.
- *Please charge it before use.
- *When you open Ⓐcap and connect ⒷUSB terminal into the USB port of PC, Ⓔcharging indicator is lit up and charging starts.
- *When charging is completed Ⓔcharging indicator blinks.

(Charging time : about 2 hours)

Battery remains indication

- *When recording starts or the body is separately from PC or USB adaptor after charging, the Ⓒlamp displays 3 step battery level for 5 seconds according to battery remaining.

Lamp Status	Turn off	Blinking	Turn on
Battery Status	0~30%	30~70%	70~100%

PC USB connect
(PC O/S: Windows XP, Vista, 7, 8, 10)

- *When this device is connected into the USB port of PC, it is recognized as a removable disk. (Recording switch must be in the stop position and it can be recognized and the movement, copy, deletion, playback of file is possible)
- *For playback, please use the music playback software of PC.
- *For the deletion of recording file, you can delete it in the same way as file deletion of PC.
- ⚠ Caution : ⒺUSB connection is possible only when recording switch is in state of stop(center).
- ⚠ Caution : When you take the product out of PC, please be sure to perform "safe removal of hardware". If you remove USB forcibly, fatal error can happen to the product.

Format

- * When you format MemoQ(removable disk) in PC, product is initialized to factory status.
- ⚠ Caution : when you format it, time setup program is also deleted.
- ⚠ Caution : Format type of FAT32 only is supported. If you change it to other type, product can not work properly.
- ⚠ Caution : Once data is deleted, it is impossible to recover it.

Tip. In formatting product, run program is deleted. After keeping run program in PC, use it in case of necessity.

Specifications

Model		MQ-U310		
Memory		8GB	16GB	32GB
Recording time	PCM	about 24 hrs	about 48 hrs	about 96 hrs
	XHQ	about 144 hrs	about 288 hrs	about 576 hrs
	HQ	about 288 hrs	about 576 hrs	about 1152 hrs
Battery time	PCM	about 12 hrs		
	XHQ	about 15 hrs		
	HQ	about 18 hrs		
Charging time		about 2 hours		
Max recording files		9,999 files		
Size, Weight		65.5(W) x 19.5(H) x 11(D)mm, 11g		
Battery		3.7V, Li-Polymer 120mAh		
Temperature		0~ 40℃		
Accessory		User's manual		

Warranty Card

Product	USB Memory & Voice Recorder
Model No	MQ-U310
Purchasing Date	
Purchasing Place	
Telephone No	
Others	
Period	1 Year
Customer	Name
	Address
	Tel.

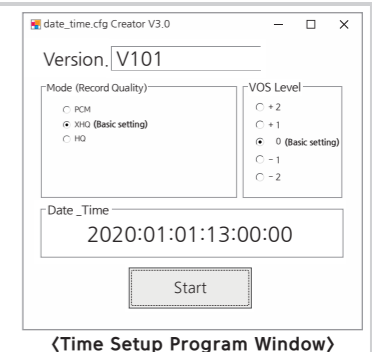
- Paid service
- Defect caused by careless use.
 - Defect caused by user's internal modification.
 - Defect caused by natural disasters like fire, salt damage, flood, earthquake, etc.
 - Defect out of warranty period.

How to recording

Setting date and time

- ① After USB connection on PC, perform the program of 'Time Setup' saved in product by double-click, and the right window of "data_time.cfg" is created in product.
- ② Click the button of "Start" in the window of "data_time.cfg Creator", and file of "data_time.cfg" is created in product.
- ③ Separate product from PC, and recording LED(Ⓒ) blinks rapidly and time setting is completed.

- ⚠ Caution-1 : Date and time set in PC is set up automatically. (Time to click the button of start is set up at the point of separating product.)
- ⚠ Caution-2 : When battery is discharged, date is initialized. Before record, perform time setting again and use it.



(Time Setup Program Window)



To set up before recording

- Time setting
- Recording sound quality setting
- VOS level setting

You can record even in a state of non-setting.
(Basic Setting)
Recording sound quality : XHQ
VOS LEVEL : 0 (Default)

Recording sound quality setting

- * in Mode(Recording Quality) within right window of "date_time.cfg Creator", select PCM or XHQ or HQ and click the button of "Start", and setting is completed.

Memory	8 GB	16 GB	32 GB	*Basic setting is "XHQ". *Recording time is the standard of memory capacity and is different from the hours of battery use (continuous recording time).	
Recording time	PCM	about 24hrs	about 48hrs		about 96hrs
	XHQ	about 144hrs	about 288hrs		about 576hrs
	HQ	about 288hrs	about 576hrs		about 1152hrs

VOS level setting

- * You can set up the volume of sound of start recording in sound detection recording
- * In VOS Level within right window of "date_time.cfg Creator", select one among "+2,+1,0,-1,-2" and setting is completed.
- * Please change after testing according to place and situation.

VOS Level				
-2	-1	0	+1	+2
(response to loud sound)	. . .	(basic setting)	. . .	(response to low sound)

Recording

- *When you turn Ⓕrecording switch to the direction of 「●●」 continuous recording starts after (Ⓒ)battery remains indication.
- *When you turn Ⓕrecording switch to the direction of 「●●」 voice operated recording(VOS) starts (Ⓒ)battery remains indication.
- *In case of voice operated recording, if sound is not detected after starting recording, recording pauses and it is recorded subsequently when sound is detected again.

- ⚠ Caution : in case of voice operated recording(VOS), the time of saved recording file varies according to detected sound. (Time can be different.)

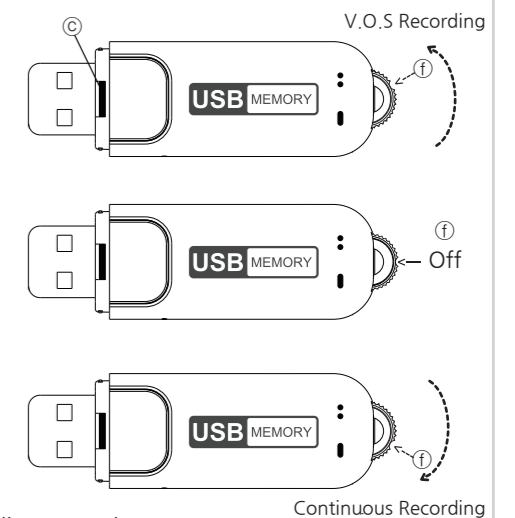
- ⚠ Caution : even in case of using voice operated recording(VOS), hours of battery use is not increased.

- *When you move the slot of Ⓕrecording switch to the center, recording stops and a new file is created in the recorder. Recording file is saved in the folder of VOICE as a format of MP3

- * Recording less than 5 hours is saved as one file, and recording more than 5 hours is divided and saved by the unit of 5 hours.

- * If recording files exceed 9,999 files, recording does not proceed any more. Please use it after deleting unnecessary recording files.

- * In case of voice operated recording(VOS), recording to detect sound is saved as one file subsequently.
- * If you carry recorder generally and can operate the start and stop of recording, continuous recording is recommendable.
- Tip** * If recorder is installed at a specific place and it is hard to operate the start and stop of recording, voice operated recording(VOS) is recommendable.



Recording

Long Recording
(use of external power)

- * After turning Ⓕ recording switch to the direction of 「●●」 or 「●●」 and starting recording, connect it to PC or USB adaptor and long-time recording is possible.
- * It is possible to record up to recording time per memory.